



Introducing a New Experience



Overview

All in one integrated LED solar street lights from ZGSM with top quality. A new revolutionary product combining solar and LED technology. The best solution for all these areas that doesn't have electricity supply, remote places with no good communications, and all the areas with electricity supply but with good climatology. The system charges the battery during the day and illuminate at night. Due to the use of LED technology, is able to maximize all the solar energy and illuminate the environment with radiant light.

Application

- Garden, Residence, Courtyard
- Areas with difficult communications
- All areas with good climatology
- Areas with no electrical supply

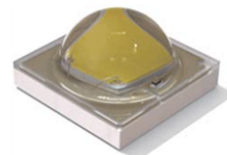


Product Benefits

LED LUMINOUS SOURCE

The new ZGSM integrated **solar street lights** utilize LG LED luminous source, which guarantees excellent lumen output up to 110Lm/W, great stability and fantastic light.

Each LG LED owns electrostatic protection component, avoiding electrostatic damage.



Infrared body sensor/ Microwave induction

With infrared body induction controlled technology, it can store energy during the daylight, and modulate it on/off when people pass through at night.

During the night, the light can work automatically controlled by the smart



sensor: It will be on bright mode when people pass through and on energy-saving mode when not (working mode can be adjusted according to client's demands).



All-in-one design

The solar panel will receive the solar energy and be stored in the Lithium-Iron battery through the charge controller, to finally be used to illuminate at night. Due to the use of high-end LED technology, the solar light will be 100% optimized.



Solar panel



Lithium-Iron battery



Controller

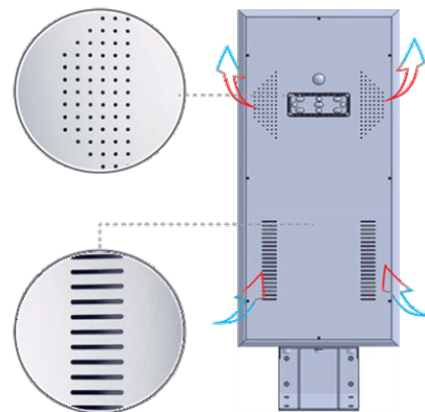
UNIQUE LUMINARIE DESIGN

The lamp is 100% Designed by ZGSM engineers. The integrated design makes the light simple, stylish and practical; solar energy supply means clean energy and clean energy means save costs. Once installed, it will not need to face any other costs.

The luminaire can be adjusted to different angles, depending on the latitude and characteristics of the land. It can be installed vertically and horizontally, or on a wall. It is designed to install, maintain or repair easily, maintain or repair. Its surface can absorb all the solar energy and its infrared body sensor modulates to save energy during night-time. All these are without cables. The Lithium-Iron battery is compressed and has three main characteristics: reduced size, high-capacity and long life-span.

Up to 110 Lm/W (Lumens per Watt) light output and +90% driver efficiency. ZGSM provide 3 years warranty for the luminaire.

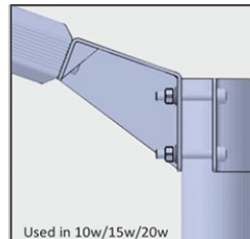
For more information about ZGSM integrated solar street light and LED lighting technologies, please visit www.zgsm-china.com.



FLEXIBLE INSTALLATION



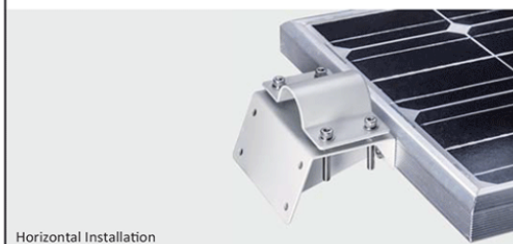
Vertical Installation



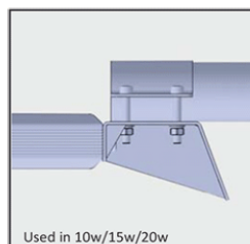
Used in 10w/15w/20w



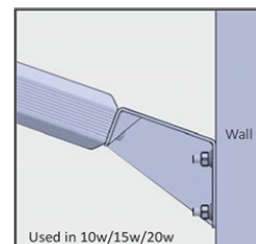
Used in 30w/40w/50w



Horizontal Installation



Used in 10w/15w/20w



Used in 10w/15w/20w

The installation can be adjusted according to different environments or illumination needs.



PRODUCTS IN THIS FAMILY

	Model no.	Input watts	Lumens	Optics	Mountings	Solar Panel Spec.	
	ZGS-M-PVLD10	10W	1100 lm	1S	Horizontal / Vertical	Monocrystal 16.8W/18V	 Spec sheet page
	ZGS-M-PVLD15	15W	1650 lm	1S	Horizontal / Vertical	Monocrystal 16.8W/18V	 Spec sheet page
	ZGS-M-PVLD20	20W	2200 lm	1S 2S	Horizontal / Vertical	Monocrystal 37.8W/18V	 Spec sheet page
	ZGS-M-PVLD30	30W	3300 lm	1S 2S	Horizontal / Vertical	Monocrystal 50.4W/18V	 Spec sheet page
	ZGS-M-PVLD40	40W	4400 lm	1S 2S	Horizontal / Vertical	Monocrystal 73.5W/18V	 Spec sheet page
	ZGS-M-PVLD50	50W	5500 lm	1S 2S	Horizontal / Vertical	Monocrystal 73.5W/18V	 Spec sheet page